

Canadian Urological Association best practice report: Prostate-specific membrane antigen positron emission tomography/computed tomography (PSMA PET/CT) and PET/magnetic resonance (MR) in prostate cancer

Bobby Shayegan, MD^{*1}; Katherine Zukotynski, MD, PhD^{*2}; François Bénard, MD^{3,4}; Cynthia Ménard, MD⁵; Joda Kuk, MD⁶; Golmehr Sistani, MD⁷; Glenn Bauman, MD⁸; Patrick Veit-Haibach, MD⁹; Ur Metser, MD⁹

¹Department of Urology, McMaster University, Hamilton, ON, Canada; ²Departments of Medicine and Radiology, McMaster University, Hamilton, ON, Canada; ³PET Functional Imaging, BC Cancer, Vancouver, BC, Canada; ⁴Department of Radiology, University of British Columbia, Vancouver, BC, Canada; ⁵Department of Radiation Oncology, Université de Montréal, Montreal, QC, Canada; ⁶Grand River Regional Cancer Centre, Grand River Hospital, Kitchener, ON, Canada; ⁷Department of Medical Imaging, Western University, London, ON, Canada; ⁸Department of Oncology, Western University, London, ON, Canada; ⁹Joint Department of Medical Imaging, University of Toronto, Toronto, ON, Canada

*Equal contributors

Cite as: Shayegan B, Zukotynski K, Bénard F, et al. Canadian Urological Association best practice report: Prostate-specific membrane antigen positron emission tomography/computed tomography (PSMA PET/CT) and PET/magnetic resonance (MR) in prostate cancer. *Can Urol Assoc J* 2021;15(6):162-72. <http://dx.doi.org/10.5489/cuaj.7268>

Published online March 1, 2021

Abstract

Prostate-specific membrane antigen (PSMA)-targeted positron emission tomography (PET) is increasingly being used worldwide as part of the clinical workup for men with prostate cancer. With high overall accuracy for the detection of prostate cancer, PSMA-targeted PET has an increasingly established role in the setting of biochemical failure after primary therapy and an evolving role in the setting of initial disease staging; its utility for guiding management in the setting of metastatic disease is less clear. Although the specificity is high, familiarization with potential pitfalls in the interpretation of PSMA-targeted PET, including knowledge of the causes for false-positive and negative examinations, is critical. The aim of this best practice report is to provide an illustrative discussion of the current and evolving clinical indications for PSMA-targeted PET, as well as a review of physiological radiopharmaceutical biodistribution and potential imaging pitfalls.

Introduction

Prostate-specific membrane antigen (PSMA), also known as glutamate carboxypeptidase II (GCP II), is a transmembrane glycoprotein highly expressed in prostate cancer cells.^{1,2} The glycoprotein acts as a glutamate carboxypeptidase on various

substrates and its enzymatic activity allows for the development of specific inhibitors that are internalized after ligand binding. PSMA expression tends to increase with increased pathological Gleason grade and is thought to be upregulated with the emergence of androgen independence.^{3,4} Both gallium-68 (⁶⁸Ga) and fluorine-18 (¹⁸F)-labeled PSMA-specific radiopharmaceuticals are clinically used. ⁶⁸Ga has a half-life of 68 minutes and is typically derived from a generator, while ¹⁸F has a half-life of 110 minutes and is produced using a cyclotron. The longer half-life of ¹⁸F facilitates off-site production and shipping of ¹⁸F-labeled PSMA-targeted radiopharmaceuticals. Further, these radiopharmaceuticals are thought to be associated with higher image resolution.^{5,6} Today, the most used PSMA-targeted positron emission tomography (PET) radiopharmaceuticals in Canada are ⁶⁸Ga-PSMA-11, ¹⁸F-DCFPyL, and ¹⁸F-PSMA-1007. The use of either hybrid PET/computed tomography (CT) or PET/magnetic resonance (MR) scanners with PSMA-targeted radiopharmaceuticals allows anatomical localization and characterization of PSMA-avid lesions.

In this best practice report, we: 1) review image acquisition and normal biodistribution of PSMA-targeted radiopharmaceuticals, including common physiological or non-prostate cancer entities, which may show increased radiopharmaceutical uptake; 2) discuss the role of PSMA-targeted PET/CT and PET/MR for common prostate cancer indications, including illustrative cases; and 3) make recommendations for the incorporation of PSMA-targeted PET into care paths in the Canadian context. Although we discuss the most common PSMA-targeted radiopharmaceuticals in general, our figures will focus on ¹⁸F-DCFPyL, currently the most commonly used PSMA-targeted radiopharmaceutical in Canada.

Integrated whole-body PET/CT and PET/MRI protocol

The acquisition protocol for PSMA-targeted PET/CT and PET/MR is similar. The suggested injected dose and uptake time for the commonly used PSMA-targeted PET radiopharmaceuticals are given in Table 1.⁷⁻⁹ After the tracer-specific uptake time, the patient is positioned supine on the imaging table, optimally with arms up. Routine image coverage is from the top of the skull to the mid-thighs. Usually, 5–9 bed positions are obtained, depending on the patient height (2–3 min/bed position). The method of attenuation correction is dependent on the imaging platform used. For PET/CT, attenuation correction maps are generated from CT data. For PET/MR, the most prevalent attenuation correction methods are MRI-based attenuation correction maps generated from a two-point Dixon Gradient-echo sequence for the entire scan field.¹⁰ The administration of IV Lasix (10–40 mg) prior to imaging may be helpful to diminish bladder activity (which can obscure uptake in the prostate gland or bed) and ureteral activity (a potential mimic of adenopathy) for agents with primary urinary clearance, such as ¹⁸F-DCFPyL.

A further purpose of the low-dose CT or MR sequences obtained with PET/CT or PET/MR, respectively, is to enable accurate localization of lesions detected on PSMA-targeted PET. To enable localization of small metastases, axial gadolinium-enhanced T1 sequence, such as the volumetric interpolated breath-hold examination (VIBE) sequence, has shown high lesion conspicuity and is time-efficient, with overall acquisition time of approximately six minutes for a whole-body acquisition.¹¹ Time-permitting, other sequences may be added, if required, including coronal T2-weighted turbo inversion recovery magnitude for bone lesions, or diffusion-weighted imaging. Due to time constraints, the use of additional sequences may be limited to cases where there is a clinical need to further characterize lesions identified on PET or on other MR sequences. Dedicated MR imaging of the prostate gland or prostate bed may be needed in specific clinical situations, for example, during the primary staging of high-risk prostate cancer with PET/MR or to confirm local recurrence of disease when PET images are obscured by activity from radiotracer in the bladder. In these

Table 1. Suggested injected dose of common PSMA tracers and optimal uptake time

Tracer	Injected dose*	Uptake time (min)
⁶⁸ Ga-PSMA-11 ¹	150±25 MBq	60–90
¹⁸ F-DCFPyL ²	300±60 MBq	60–120
¹⁸ F-PSMA-1007 ³	300±60 MBq	60–120

*Calculated for 75 kg man: 4±0.8 MBq/kg for ¹⁸F-F-DCFPyL and ¹⁸F-PSMA-1007 and 2±0.33 MBq/kg for ⁶⁸Ga-PSMA-11; and 5±1 MBq/kg for ¹⁸F-FDG. These values can be adjusted according to body weight. PSMA: prostate-specific membrane antigen.

instances, routine MR protocols are used. These generally include multiplanar T2-weighted sequences and diffusion-weighted sequences, as well as pre- and post-dynamic contrast-enhanced MR. The approach of more comprehensive prostate or body imaging typically requires real-time monitoring of the imaging study by a radiologist and/or nuclear medicine physician.

Normal biodistribution of PSMA-targeted radiopharmaceuticals and common PSMA-avid benign entities

Physiological, high PSMA-targeted radiopharmaceutical uptake is seen in PSMA-expressing organs, such as the lacrimal and salivary glands, as well as the kidneys. Moderate radiopharmaceutical uptake is seen in the spleen and nasopharynx, and variable uptake is seen in the vocal cords, trachea, and bronchi, as well as the proximal gastrointestinal tract (Figs. 1A, 1B).¹² The degree of uptake in the liver and accumulation in the urinary tract and bladder varies depending on the clearance mechanism of the specific radiopharmaceutical. Most PSMA-targeted radiopharmaceuticals are cleared via the genitourinary tract, with high accumulation in the urinary tract and bladder and moderate uptake in the liver.¹² ¹⁸F-PSMA-1007 is an exception, with primarily hepatobiliary clearance, higher uptake in the liver, and little accumulation in the ureters and bladder.¹³ Lack of renal clearance may aid in identifying disease sites adjacent to the bladder and ureters, such as local tumor recurrence after prostatectomy. Peripheral neural structures, including

Table 2. Benign processes which may be associated with increased PSMA uptake

	Origin	Subcategory	Entity
Benign tumors	Mesenchymal	Vascular/ perivascular	Hemangioma, angiomyolipoma
		Neural origin	Meningioma, peripheral nerve sheath tumors
		Connective tissue	Fibrous histiocytoma, dermatofibroma, aggressive fibromatosis, myxoma, pseudoangiomatous stromal hyperplasia (breast)
	Epithelial	Adenoma	Adrenal, thyroid, pancreatic serous cystadenoma
		Thymoma	
Infectious or inflammatory			Various infectious, sarcoidosis
Bone remodeling			Fracture, degenerative (osteophyte), Paget's disease
Other			Amyloidosis

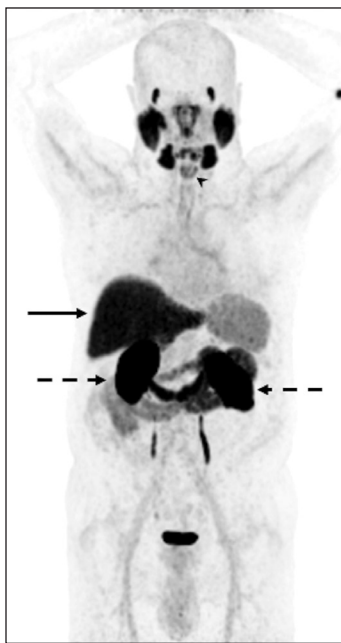


Fig. 1. Normal biodistribution of ¹⁸F-DCFPyL (a common PSMA radiopharmaceutical). (A) Maximum Intensity Projection (MIP) image showing high uptake in lacrimal and salivary glands and kidneys (dotted arrows), moderate uptake in liver (solid arrow) and low to moderate uptake in the spleen and vocal cords (arrowhead).

the ganglia and nerve roots, may show physiological increased radiopharmaceutical uptake. The celiac and stellate ganglia have been described as potential pitfalls for the assessment of retroperitoneal and supraclavicular lymph node disease spread, respectively (Fig. 2).

Despite its name, PSMA is not prostate-specific and there are numerous non-prostate malignancies, as well as benign processes, which have been reported to be PSMA-avid.¹⁴ This may be, in part, related to the expression of PSMA on the cell membrane or increased endothelial PSMA expression in neovasculature. Although the list of benign entities associated with increased PSMA uptake is evolving (Table 2), it includes infectious and inflammatory processes (e.g., sarcoidosis), as well as benign neoplasms consisting of mesenchymal tumors (vascular, neurogenic, connective tissue origin) and epithelial tumors, including those of thymic origin, and adenomas in various organs. Bone remodelling may also be PSMA-avid, and increased tracer uptake may be seen with healing fractures, as well as degenerative or arthritic processes (e.g., osteophytes), among others. Although not well-understood, increased blood flow and vascular permeability may explain, at least in part, the increased PSMA uptake in inflammatory conditions. Disruption of the blood-brain barrier has been suggested as the etiology for focal abnormal radiopharmaceutical accumulation in acute or subacute ischemic cerebrovascular events.¹⁵ The pattern of distribution and correlation with imaging features may aid in accurately characterizing the benign process (Fig. 3).

Other (non-prostate) PSMA-avid malignancies

Several malignancies are PSMA-avid and can have a range of PSMA intensity. As an illustration, Fig. 4 shows an intensely PSMA-avid adrenal leiomyosarcoma, while Fig. 5 shows intensely PSMA-avid primary thyroid cancer. Uptake in non-small cell lung cancer may be mild or intense (Fig. 6). In certain cases, the use of more than one radiopharmaceutical may be helpful for disease characterization. Fig. 7 shows a man with concurrent nasopharyngeal cancer and prostate

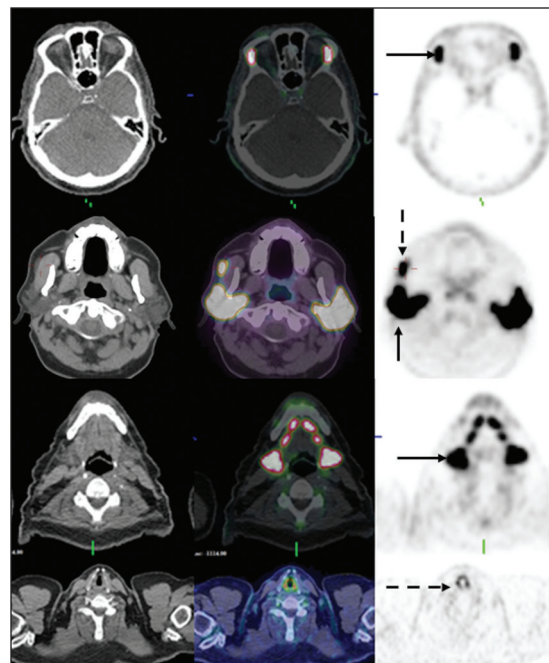


Fig. 1B. Axial CT, fused ¹⁸F-DCFPyL PET/CT and PET images showing high uptake in lacrimal glands (arrow; top row), salivary glands (arrow; middle rows), accessory salivary gland (dotted arrow middle row) and moderate uptake in the larynx (dotted arrow; bottom row).

adenocarcinoma (Gleason 7). While the nasopharyngeal cancer is intensely FDG-avid and mildly PSMA-avid, the prostate cancer is intensely PSMA-avid and mildly FDG-avid. It is important to remember that the intensity of PSMA uptake does not imply a diagnosis of prostate vs. non-prostatic malignancy. Fig. 8 shows a case of an intensely PSMA-avid sternal metastasis related to prostate cancer in a patient with an intensely PSMA-avid hepatocellular carcinoma. Additional non-prostatic malignancies that have been shown to be PSMA-avid include malignancies of the gastrointestinal tract, renal cell carcinoma, neuroendocrine malignancy, gliomas, and breast cancer, among others. Further, as our

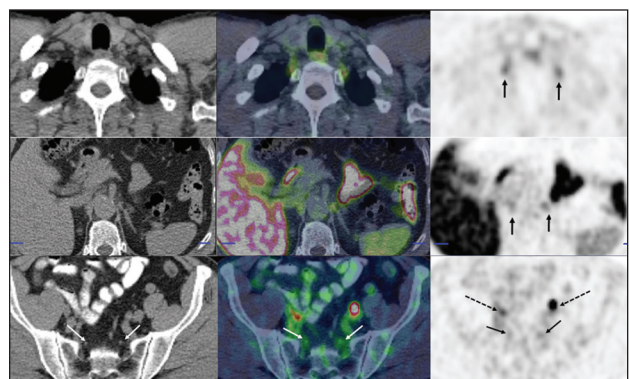


Fig. 2. Axial CT, fused ¹⁸F-DCFPyL PET/CT and PET images showing uptake in the stellate ganglia (arrows, top row), celiac ganglia (arrows, middle row) and sacral ganglia (solid arrow bottom row; ureters – dotted arrows).

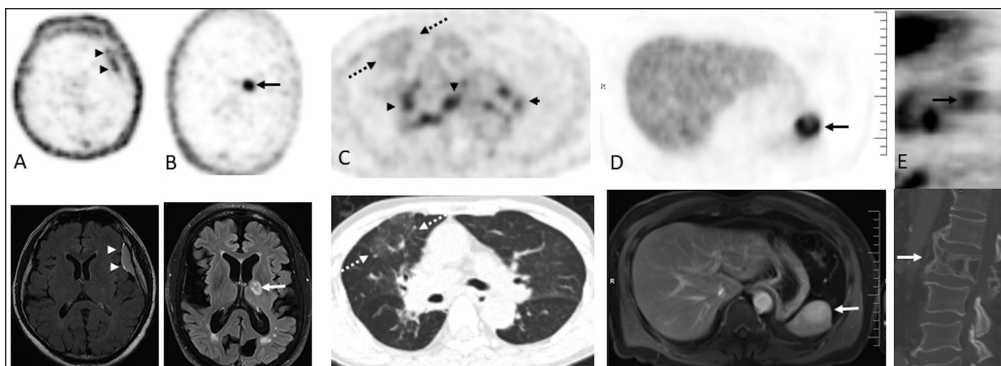


Fig. 3. Benign processes showing increased ^{18}F -DCFPyL uptake on axial PET images, top row and corresponding MRI/CT images, bottom row. **(A)** Focal uptake is seen corresponding to a hyperintense left frontotemporal dural-based mass on fluid-attenuated inversion recovery MR image (arrowheads), in keeping with a meningioma. **(B)** Focal uptake (arrow) is seen in the region of the left basal ganglia with no corresponding abnormality on non-contrast CT. Axial fluid-attenuated inversion recovery MR image (white arrow), shows an infarct. **(C)** A 76-year-old man with a history of Gleason 7 prostate carcinoma post radical prostatectomy 13 years ago with new biopsy-proven recurrence; PSA=1.51 ng/ml. Diffuse uptake in patchy ground glass opacities (right upper lobe, dotted arrows: SUVmax 1.9) and in bilateral hilar and mediastinal lymph nodes (arrowheads; SUVmax 4.7) is in keeping with an infectious process, likely due to aspiration per clinical history. **(D)** A 65-year-old man with newly diagnosed cT3b Gleason 9 (4+5) prostate cancer in 5/14 cores. Serum PSA=7.5 ng/ml. Staging ^{18}F -DCFPyL PET/CT showed uptake in the prostate tumor (not shown) and in a 3.5 cm (SUVmax 21.0) enhancing splenic mass (arrow), with imaging features consistent with a hemangioma. **(E)** A 75-year-old male with a history of pT3bN1 Gleason 4+3 adenocarcinoma of prostate cancer, with biochemical recurrence post-radical prostatectomy (serum PSA=1.6 ng/ml). Sagittal images from a ^{18}F -DCFPyL PET/CT shows focal uptake in the L2 vertebral body (arrow), with cortical thickening, coarsening of bone trabeculation and rectangular expansile appearance of the vertebral body, in keeping with Paget's disease.

experience with PSMA-targeted PET increases, so too does our appreciation of PSMA uptake due to benign etiologies (Figs. 9, 10) and unusual patterns of prostate cancer disease spread (Fig. 11). Ultimately, it is important to have the complete patient history, including any imaging prior to PSMA-targeted PET interpretation and even so, biopsy may be needed for pathological characterization in certain cases.

Clinical indications for PSMA-targeted PET

While access to PSMA-targeted PET currently remains variable across Canada, Table 3 provides suggested indications, including the quality of supportive evidence and recommendation strength.¹⁶

Staging of biochemical recurrence

The most common indication for PSMA-targeted PET is for the evaluation of disease in men with biochemical failure after primary prostate cancer therapy. The clinical management of men with biochemical recurrence depends on disease extent: local recurrence (Fig. 12) or local recurrence with regional nodal metastases vs. distant metastatic disease (Fig. 13). While discussion regarding optimal management of men with biochemical failure is ongoing, there is general agreement that accurate identification of disease location and extent is key to determining the most appropriate management (Fig. 14). Several trials have evaluated the role of surgery, radiation, or a combination of ablative procedures

in men with localized, oligometastatic, or low-volume disease.¹⁷⁻²⁰ Further, studies have shown high performance of PSMA-targeted PET in this patient population.

There is a correlation between observed disease detection rates and serum prostate-specific antigen (PSA) level,²¹⁻²⁴ although PSMA-targeted PET may be useful in detecting disease sites even when the serum PSA is low. Approximately 38% of PSMA-targeted PET scans show disease sites in men with PSA <0.5 ng/ml.²⁵ A prospective trial of 635 patients showed a positive predictive value of 84–92% for ^{68}Ga -PSMA-11 PET in localizing disease, with PET-directed focal therapy alone leading to a PSA drop of $\geq 50\%$ in 31/39 (80%) patients.²⁶ A literature review suggested the impact of PSMA-targeted PET on management ranged from 30–76% among 1346 patients. Modifications made to pre-PSMA-targeted PET planned management included avoidance of systemic therapy (19–50%) and PET-directed local therapy in up to 60% of cases.²⁵ Notably, prospective series of men with early biochemical failure and negative PSMA-targeted PET may still have high rates of response to salvage radiotherapy, suggesting these

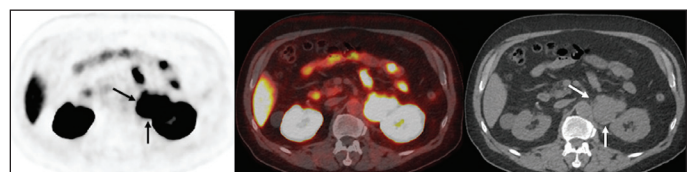


Fig. 4. Axial ^{18}F -DCFPyL PET, fused PET/CT, and CT images show intense uptake in a patient with a left adrenal leiomyosarcoma (arrows).

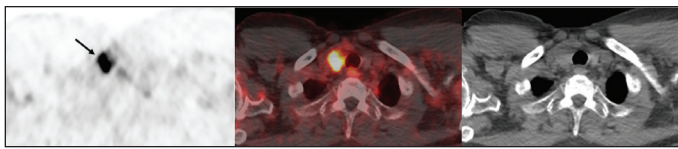


Fig. 5. Axial ^{18}F -DCFPyL PET, fused PET/CT and CT images show intense uptake in primary thyroid cancer of the right thyroid lobe (arrow).

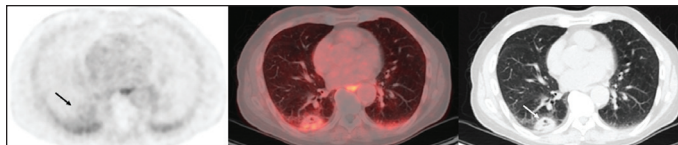


Fig. 6. Axial ^{18}F -DCFPyL PET, fused PET/CT and CT images show mild uptake in primary adenocarcinoma of the right lung (arrow).

negative scans may indicate subclinical disease within the prostate bed rather than subclinical metastatic disease.^{27,28} Several prospective trials and long-term outcome studies on the impact of PSMA-targeted PET-directed personalized patient management for prostate cancer are underway (i.e., NCT03582774 - PSMA-SRT Trial, NCT04557501- PATRON and NCT03525288-PSMA-PETgRT).

Despite the strengths of PSMA-targeted PET, there are also limitations and pitfalls (Fig. 15). Reasons for false-negative studies include, among others: small tumor volume, such as may be seen in men with early-stage biochemical recurrence when the serum PSA is below 0.5 ng/ml or neuroendocrine differentiation of prostate cancer with downregulation of PSMA expression.²⁹ It is estimated neuroendocrine differentiation occurs in 5–10% of prostate cancers overall and approximately 30% of men with advanced disease.³⁰ Androgen receptor inhibition has been shown to increase PSMA expression in prostate cancer cells early on (approximately four weeks following androgen deprivation therapy [ADT]).³¹ Continuous, long-term ADT likely induces downregulation or loss of androgen receptors and PSMA expression in addition to decreasing tumor volume.^{32,33} Thus, short-term ADT likely increases PSMA-targeted PET positivity, whereas prolonged, continuous ADT is associated with a higher likelihood of a negative PSMA-targeted PET.

Primary staging of high-risk prostate cancer

Studies assessing the use of PSMA-targeted PET for staging men with prostate cancer are not numerous; however, there is a growing body of supportive literature in patients with high-risk disease. The prospective, multicenter, randomized Pro-PSMA trial assessed whether PSMA-targeted PET/CT could replace CT and bone scintigraphy (conventional imaging [CI]) in the initial staging of high-risk localized prostate cancer. There were 302 men randomized to CI or PET/CT. PET/CT performed significantly better than CI with sensitivity, specificity, and overall accuracy: 85% vs. 38%, 98% vs. 91%, and 92% vs. 65%, respectively. Furthermore,

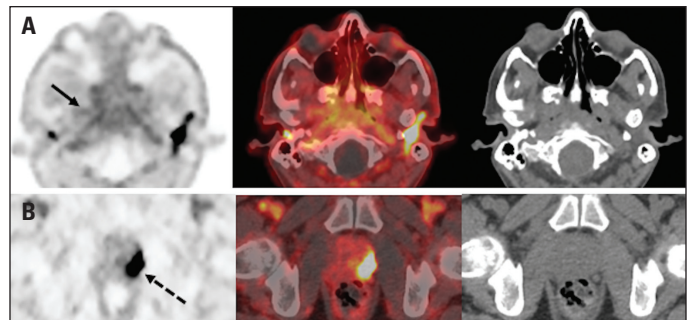


Fig 7. (A) 58-year-old man with concurrent nasopharyngeal cancer and prostate cancer. Axial ^{18}F -DCFPyL PET, fused PET/CT, and CT images show mild uptake in the nasopharyngeal cancer (solid arrow top row) and intense uptake in the prostate cancer (dotted arrow bottom row). **(B)** Axial ^{18}F -FDG PET, fused PET/CT and CT images in the same 58-year-old man with concurrent nasopharyngeal cancer and prostate cancer show intense uptake in the nasopharyngeal cancer (solid arrow, top row) and mild uptake in the prostate cancer (dotted arrow; bottom row).

there were less equivocal findings on PET/CT than on CI (7% vs. 23%).³⁴ Although the sensitivity of PET/CT in detecting nodal disease may not be enough to obviate the need for lymph node dissection in patients at risk for disease spread, PET/CT may identify nodes outside of the routine surgical field, as well as additional sites of distant disease (Fig. 16). In the Pro-PSMA trial, PSMA-targeted PET/CT resulted in more frequent management change than CI (28% vs. 15%), and when looking at patients who had <4 metastases on CI, a change in management occurred with subsequent PET/CT in more than 1/4 of men.³⁴ To date, comparisons of outcome using PET/CT vs. CI remain scarce.

Primary detection of tumor as an adjunct to multiparametric MRI

The current workup of patients with clinically suspected prostate cancer includes transrectal ultrasound (TRUS)-guided systematic biopsy. TRUS-guided biopsies are associated with a relatively high false-negative rate, with clinically significant prostate cancer missed in approximately a quarter of men.^{35,36} This may be due to constraints of random samples or technical limitations in obtaining samples from specific areas, such as the fibromuscular stroma, apex, or midline gland.^{37,38} In

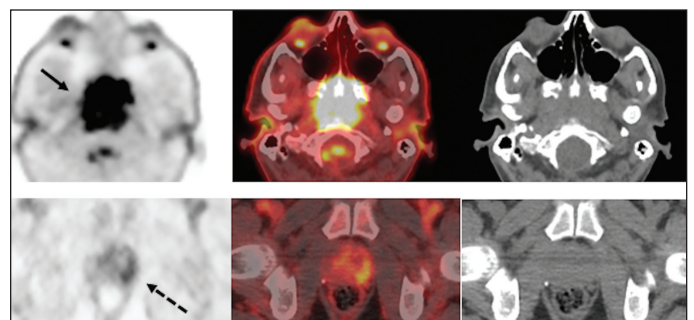


Fig. 7C. Axial ^{18}F -FDG PET, fused PET/CT and CT images show intense uptake in known nasopharyngeal cancer (solid arrow, top row) and a mild uptake in known prostate cancer (dotted arrow; bottom row).

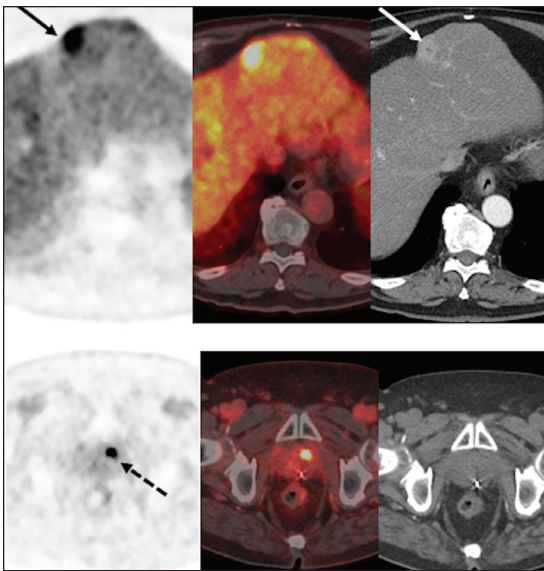


Fig. 8. Axial ^{18}F -DCFPyL PET, fused PET/CT, and CT images in a 76-year-old man show intense uptake in concurrent hepatocellular carcinoma (arrows, top row) and prostate cancer (dotted arrow bottom row).

recent years, multiparametric magnetic resonance imaging (mpMRI) has been incorporated in the workup of men with suspected prostate cancer, showing considerable promise in detection, localization, risk stratification, and staging of prostate cancer. In a meta-analysis of seven studies evaluating mpMR, de Rooij et al found a pooled sensitivity and specificity of 0.74 and 0.88, respectively, with negative predictive value of 0.65–0.94.³⁹ mpMRI is reported using a standardized scheme (Prostate Imaging and Reporting Archiving Data System [PI-RADS]). A validation study of lesions with score ≥ 4 (using PI-RADS v2 suspicious for malignancy) found an overall sensitivity and specificity of 77.0–77.3% and 71.4–73.8%, respectively, for the detection of castration-sensitive prostate cancer.⁴⁰ A small series suggested PSMA-targeted PET identified histologically confirmed intraprostatic cancer sites⁴¹ and may have performance comparable and complementary to mpMRI in the characterization of clinically significant (Gleason grade group ≥ 2) disease.⁴² The role of PSMA-targeted PET as an adjunct to mpMRI for primary detection of clinically significant prostate cancer, especially lesions with a PI-RADS v2 score of 3 (equivocal) or 4 (suspicious), is not

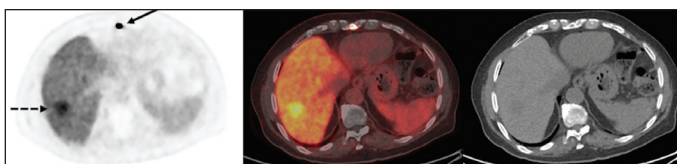


Fig. 9. Axial ^{18}F -DCFPyL PET, fused PET/CT, and CT images in a 79-year-old man with prostate cancer show the mild uptake in a hepatic nodule (dotted arrow) found to be a cavernous hemangioma on MR (not shown). There is also intense uptake at a site of prostate cancer metastasis to the sternum (arrow).

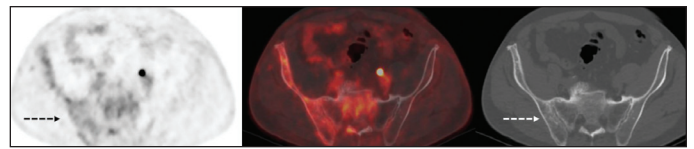


Fig. 10. ^{18}F -DCFPyL PET/CT in benign and malignant bone lesions. **(A)** Axial ^{18}F -DCFPyL PET, fused PET/CT and CT images show mild uptake associated with Paget's of the right hemipelvis (dotted arrow).

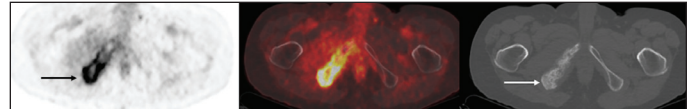


Fig. 10B. In contrast, axial ^{18}F -DCFPyL PET, fused PET/CT and CT images show intense uptake at a site of prostate cancer metastasis in the inferior pubic ramus (solid arrow).

well-established and is being investigated in a prospective trial [NCT03149861] (Fig. 17).

Evaluation of men with metastatic prostate cancer

Currently, clinical management pathways for men with metastatic prostate cancer are based on the results of conventional imaging with a bone scan and CT. PSMA-targeted PET can identify sites of metastatic disease at the time of initial staging, biochemical recurrence, and in the setting of castration-resistance in the absence of lesions on conventional imaging.⁴³ Although the impact of PSMA-targeted PET on management and outcome is a topic of research, in general, accurate identification of metastatic disease is important to determining appropriate management. For example, in the setting of hormone-sensitive metastatic disease, the extent of



Fig. 11. A 69-year-old man with metastatic prostate cancer spread to retroperitoneal and cervical lymph nodes. **(A)** Maximum intensity projection image shows intense ^{18}F -DCFPyL uptake in retroperitoneal (dotted arrows) and cervical nodes (solid arrows).

disease is used to inform decisions on the addition of chemotherapy or second-line hormone therapy to standard androgen deprivation with luteinizing hormone-releasing hormone (LHRH) agonists or antagonists.⁴⁴ In the setting of oligometastatic/oligoprogressive metastatic prostate cancer, small, phase 2 randomized trials^{45,46} have suggested a benefit of deferring initiation of or changes in systemic therapy. Additional data from large, randomized trials, such as the PLATON study, (CTG PR20 - NCT03784755) are being obtained.

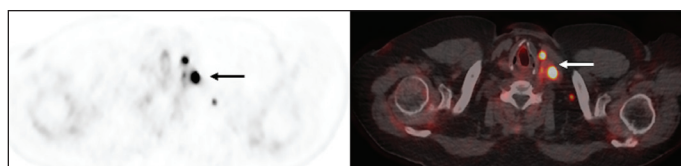


Fig. 11B. Axial ¹⁸F-DCFPyL PET and fused PET/CT images further delineate the cervical lymph node disease (arrow).

Currently, the established response criteria across the spectrum of prostate cancer, including castration-resistant disease, are based on clinical, biochemical, and conventional imaging parameters.⁴⁷ While PET-based biomarkers offer the potential for quantitative evaluation of response, these metrics have yet to be validated in clinical populations and are not yet part of current decision-making pathways.⁴⁸ While the clinical importance of more comprehensive staging and PET-based response assessment remains to be defined, PSMA-targeted PET may prove to be increasingly helpful as a diagnostic tool paired with PSMA-targeted therapy.

Both ¹⁷⁷Lu and ²²⁵Ac PSMA-targeted radioligand therapy are emerging as promising therapies for castration-resistant disease.⁴⁹ Recently, several clinical trials have assessed the role of radionuclide therapy using ¹⁷⁷Lu-labeled PSMA ligands in men with metastatic castration-resistant prostate cancer after failure of androgen receptor axis targets (enzalutamide/abiraterone) and/or chemotherapy. The European Association of Nuclear Medicine guiding principles for radionuclide therapy with ¹⁷⁷Lu-labeled PSMA-ligands⁵⁰ outlines potential indications and procedure guidelines for the use of ¹⁷⁷Lu-PSMA therapy in men with metastatic castration-resistant prostate cancer. The idea is based on the concept of using a predictive biomarker, specifically high avidity in putative sites of disease on PSMA-targeted PET, followed by individualized treatment

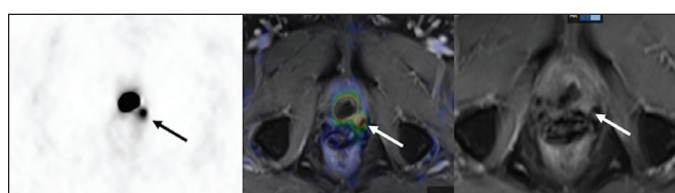


Fig. 12. A 62-year-old man 18 years post-radical prostatectomy for pT2c N0 Gleason 7 (3+4) prostate cancer and 10 years post-salvage radiotherapy to prostate bed. Now rising PSA (latest 0.39 ng/ml). Axial ¹⁸F-DCFPyL PET, fused PET/MR images and contrast-enhanced volumetric interpolated breath-hold (VIBE) MR image at the level of the prostate bed show a PSMA-avid nodule to the left of the surgical anastomosis (arrow) in keeping with local tumor recurrence (subsequently biopsy proven). No nodal or distant metastases were seen.

with a therapeutic agent, such as ¹⁷⁷Lu-labeled PSMA-targeted compounds.^{51,52} The optimal threshold of PSMA uptake at tumor sites for patient selection prior to radionuclide therapy is a topic of debate, with proponent for uptake comparable to liver activity through proponents of intense uptake on the order of SUVmax 20 or higher.⁵⁰⁻⁵²

Regardless, PSMA-targeted PET is likely to prove helpful for determining patient suitability for PSMA-targeted radionuclide therapy. Some authors suggest a combination of FDG and PSMA-targeted PET may be preferable to PSMA-targeted PET alone for optimal patient selection. It is thought that patients with PSMA-positive and FDG-negative disease may have the highest response rates; however, this remains to be verified in clinical trials.⁴⁹ Also, the optimal schedule and dose of ¹⁷⁷Lu-PSMA radiopharmaceuticals remain to be determined, and the use of ¹⁷⁷Lu-PSMA vs. ²²⁵Ac-PSMA radiopharmaceuticals are areas of active investigation. Finally, the results of randomized trials of PSMA-targeted radiopharmaceuticals compared to best supportive care (VISION, NCT03511664), chemotherapy (TheraP, NCT0392428), and

Table 3. Suggested indications for PSMA-targeted PET

	Indication	Evidence quality	Recommendation strength	Current recommendation
Diagnosis	Primary diagnosis of prostate cancer	3	4	PSMA-targeted PET may be helpful to identify clinically significant prostate cancer when systematic biopsies and MRI are negative
Primary staging	Primary staging of high-risk prostate cancer	3	2	PSMA-targeted PET may be helpful if a change in management is contemplated
Castration-sensitive	Rising PSA after prostatectomy; locoregional salvage considered	1	1	PSMA-targeted PET may be helpful if locoregional salvage is considered
	Rising PSA after radiotherapy; locoregional salvage considered	2	2	PSMA-targeted PET may be helpful if locoregional salvage is considered
	Potentially oligometastatic, castration-sensitive prostate cancer	2	2	PSMA-targeted PET may be helpful to confirm oligometastatic vs. extensive disease
Castration-resistant	Non-metastatic	3	2	PSMA-targeted PET may be helpful if a change in management is contemplated
	Metastatic with PSA progression (stable on CI)	4	3	PSMA-targeted PET should not be routinely offered outside of a clinical trial
	Metastatic with radiographic progression on CI	4	2	PSMA-targeted PET should not be routinely offered outside of a clinical trial

Quality of evidence: 1=high; 2=intermediate; 3=weak; 4=insufficient. Strength of recommendation: 1=strong; 2=moderate; 3=weak. CI: conventional imaging (CT, bone scintigraphy). MRI: magnetic resonance imaging; PET: positron emission tomography; PSA: prostate-specific antigen; PSMA: prostate-specific membrane antigen.

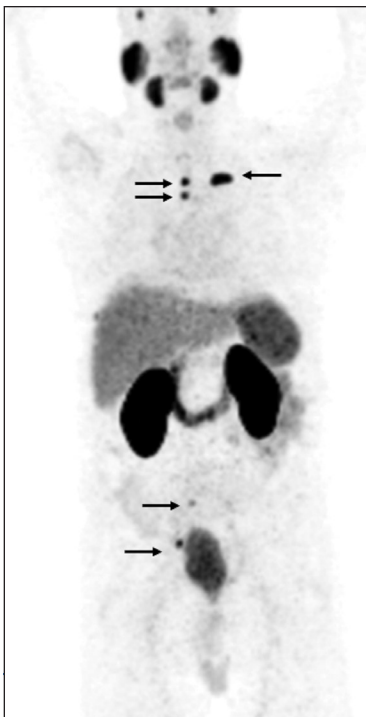


Fig. 13. A 70-year-old man 3 years post-radical prostatectomy for pT3a, N0 Gleason 7 (4+3) prostate cancer, with negative surgical margins and biochemical recurrence (latest serum PSA= 1.18 ng/ml). (A) Maximum intensity projection image shows multiple sites of abnormal ¹⁸F-DCFPyL uptake.

enzalutamide (ARROW, NCT03939689) will likely provide additional guidance in the near future.

Current recommendations for PSMA PET/CT in the Canadian context

Currently, PSMA-targeted PET is being

integrated into the prostate cancer care pathway worldwide. While there are no PSMA-targeted PET radiopharmaceuticals approved by Health Canada for routine use in clinical care, it seems reasonable that PSMA-targeted PET will become part of routine clinical care in Canada in the near future.

To date, data strongly suggests the performance of PSMA-targeted PET is superior to CI in characterizing prostate cancer across the spectrum of disease, although the ultimate impact of this on patient outcome remains to be determined. As summarized in Table 3, PSMA-targeted PET is useful primarily for staging primary, high-risk prostate cancer, and

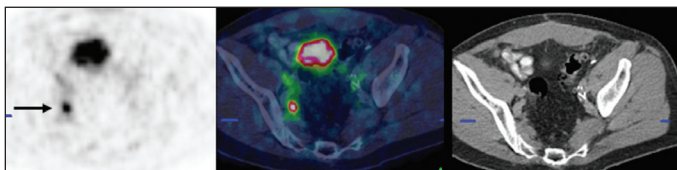


Fig. 13B. Axial ¹⁸F-DCFPyL PET, fused PET/CT and CT images of the pelvis show intense uptake in a right external iliac lymph node (arrow).

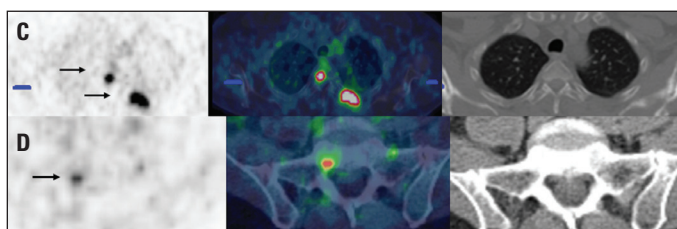


Fig. 13C, D. Axial ¹⁸F-DCFPyL PET, fused PET/CT, and CT images in the upper chest (top row) and sacrum (bottom row).

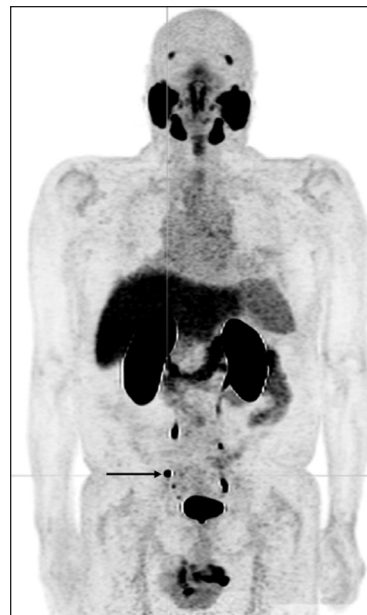


Fig. 14. A 67-year-old man 6 years post-radical prostatectomy for pT3b N0, Gleason 7 (4+3) prostate cancer and 4 years post-salvage pelvic radiotherapy for biochemical recurrence with rising serum PSA (latest 0.76 ng/ml). (A) Maximum intensity projection image shows a solitary site of intense ¹⁸F-DCFPyL uptake in the right pelvis (arrow).

re-staging biochemically recurrent disease after primary therapy. To expand further, patients with high-risk or very high-risk prostate cancer in whom imaging with conventional modalities fails to demonstrate metastatic disease (and

where its identification would lead to a treatment change), PSMA-targeted PET may be contemplated. In those with non-metastatic, castration-resistant prostate cancer in whom PSA kinetics are favorable and where systemic treatment intensification is not warranted, identification of metastases by PSMA-targeted PET may allow for inclusion into clinical trials assessing utility of metastasis-directed therapy.

A large Canadian clinical trial of PSMA-targeted PET informed treatment vs. standard of care informed treatment in high-risk primary and recurrent disease is planned (i.e., PATRON-NCT04557501). In the setting of established metastatic disease (castration-sensitive and castration-resistant), the utility of PSMA-targeted PET is less well-established, although it will likely present a powerful tool, particularly when paired with PSMA-targeted radiopharmaceutical therapy.

Despite the superior detection of disease by PSMA-targeted PET, it must be emphasized that to date, there is no evidence to support that such enhancements have led to improved clinical outcomes. Clinical trials addressing this issue are underway, and thus, while today's care pathways

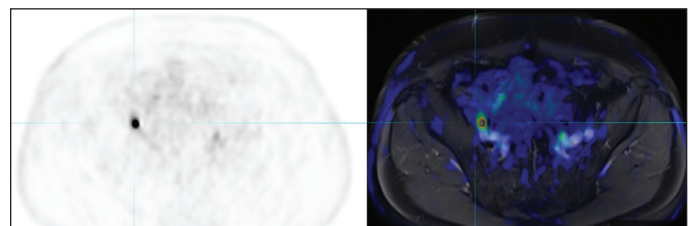


Fig. 14B. Axial ¹⁸F-DCFPyL PET and fused PET/MR images show intense focal uptake in a right external iliac lymph node (crosshair). ¹⁸F-DCFPyL PET/CT performed 4 months after salvage pelvic lymph node dissection with 1 of 11 resected pelvic nodes positive for metastasis showed no metastatic sites (not shown). Serum PSA was undetectable.

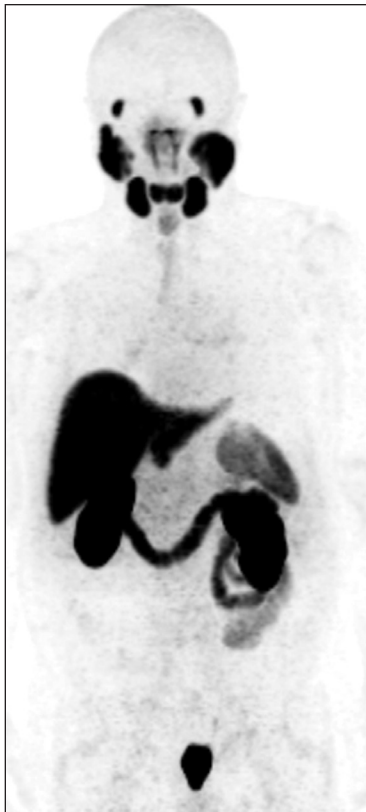


Fig. 15. A 63-year-old man with Gleason 7 (4+3) prostate cancer initially treated with radical prostatectomy and progression of biochemical failure 8-months after pelvic radiotherapy for pelvic sidewall lymph node recurrence. (A) Maximum intensity projection image shows normal ¹⁸F-DCFPyL biodistribution with no evidence of disease recurrence.

remain based on well-established clinical criteria and standard-of-care imaging that does not include PSMA-targeted PET, this is likely to change in the future.

Conclusions

PSMA-targeted PET has high overall accuracy for the detection of prostate cancer and a growing role in determining patient management,

particularly in men with high-risk disease at the time of staging and biochemical failure after primary therapy. As PSMA-targeted PET becomes more ubiquitous in clinical practice, increased familiarization with potential pitfalls in image interpretation and knowledge of the reasons for both false-positive and false-negative examinations are critical. Ongoing research will help clarify the long-term impact of PSMA-targeted PET on patient outcome, as well as to better define the relative strengths and weakness of the individual available PSMA-targeted PET radiopharmaceuticals.

Competing interests: Dr. Shayegan has been an advisory board member for Astellas, Bayer, and Janssen; and has received a research grant from Janssen. The remaining authors report no competing personal or financial interests related to this work.

Prior to publication, this BPR was reviewed and approved by the CUA Guidelines Committee, CUA members at large, and the CUA Board.



Fig. 15B. Axial fused ¹⁸F-DCFPyL PET/CT, CT, and PET images show a 2 cm segment 7 right hepatic lobe hypodensity (arrow), not seen previously, that was not PSMA-avid.



Fig. 15C. Coronal contrast-enhanced CT images show multiple liver metastases (arrows), not previously seen. Biopsy of a segment 6 lesion confirmed adenocarcinoma with an immunohistochemistry profile consistent with prostatic origin.

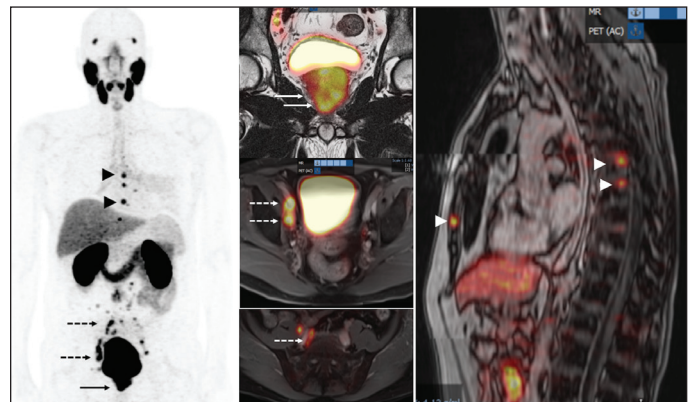


Fig. 16. A 58-year-old man with high-volume Gleason 9 (4+5) prostate cancer with seminal vesicle invasion (cT3b). Baseline serum PSA=217 ng/ml; negative conventional workup. Maximum intensity ¹⁸F-DCFPyL PET image and select coronal, axial, and sagittal PET/MR images show extensive primary tumor (solid arrows), metastatic pelvic (miN), and common iliac lymph nodes (miM1a) (dotted arrows), as well as multiple bone metastases (miM1b) (arrowheads).

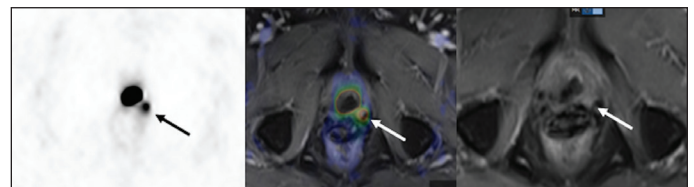


Fig. 17. A 65-year-old man with clinical suspicion of prostate cancer and prior negative systematic transrectal ultrasound-guided biopsies. Axial ¹⁸F-DCFPyL PET, fused PET/MR and MR images shows focal intense uptake in the right peripheral zone in the mid gland, towards the apex. Biopsy revealed Gleason 7 (4+3) prostate cancer.

References

- Maurer T, Eiber M, Schwaiger M, et al. Current use of PSMA-PET in prostate cancer management. *Nat Rev Urol* 2016;13:226-35. <https://doi.org/10.1038/nrurol.2016.26>
- Silver DA, Pellicer, I, Fair WR, et al. Prostate-specific membrane antigen expression in normal and malignant human tissues. *Clin Cancer Res* 1997;3:81-5.
- Kasperzyk JL, Finn SP, Flavin R, et al. Prostate-specific membrane antigen protein expression in tumor tissue and risk of lethal prostate cancer. *Cancer Epidemiol Biomarkers Prev* 2013;22:2354-63. <https://doi.org/10.1158/1055-9965.EPI-13-0668>
- Meller BF, Bremmer CO, Sahlmann S, et al. Alterations in androgen deprivation enhanced prostate-specific membrane antigen (PSMA) expression in prostate cancer cells as a target for diagnostics and therapy. *EJNMMI Res* 2015;5:66. <https://doi.org/10.1186/s13550-015-0145-8>
- Hillier SM, Maresca, KP, Femia FJ, et al. Preclinical evaluation of novel glutamate-urea-lysine analogues that target prostate-specific membrane antigen as molecular imaging pharmaceuticals for prostate cancer. *Cancer Res* 2009;69:6932-40. <https://doi.org/10.1158/0008-5472.CAN-09-1682>
- Chen Y, Pullambhatla M, Foss CA, et al. 2-(3-(1-Carboxy-5-[(6-[18F]fluoro-pyridine-3-carbonyl)-amino]-penyl)-ureido)-pen tanedioic acid, [18F]DCFPyL, a PSMA-based PET imaging agent for prostate cancer. *Clin Cancer Res* 2011;17:7645-53. <https://doi.org/10.1158/1078-0432.CCR-11-1357>
- Haupt F, Dijkstra L, Alberts I. 68Ga-PSMA-11 PET/CT in patients with recurrent prostate cancer—a modified protocol compared with the common protocol. *Eur J Nucl Med Mol Imaging* 2020;47:624-31. <https://doi.org/10.1007/s00259-019-04548-5>
- Mena E, Lindenberg ML, Turkbey IB, et al. 18F-DCFPyL PET/CT imaging in patients with biochemical recurrence prostate cancer after primary local therapy. *J Nucl Med* 2020;61:881-9. <https://doi.org/10.2967/jnumed.119.234799>
- Giesel FL, Knorr K, Spohn F, et al. Detection efficacy of 18F-PSMA-1007 PET/CT in 251 patients with biochemical recurrence of prostate cancer after radical prostatectomy. *J Nucl Med* 2019;60:362-8. <https://doi.org/10.2967/jnumed.118.212233>
- Delso G, Fürst S, Jakob B, et al. Performance measurements of the Siemens mMR integrated whole-body PET/MR scanner. *J Nucl Med* 2011;52:1914-22. <https://doi.org/10.2967/jnumed.111.092726>
- Metser U, Chan R, Veit-Haibach P, et al. Comparison of MRI sequences in whole-body PET/MRI for staging of patients with high-risk prostate cancer. *AJR Am J Roentgenol* 2019;212:377-81. <https://doi.org/10.2214/AJR.18.20495>
- Demirci E, Sahin OE, Ocak M, et al. Normal distribution pattern and physiological variants of 68Ga-PSMA-11 PET/CT imaging. *Nucl Med Commun* 2016;27:1169-79. <https://doi.org/10.1097/MNM.0000000000000566>
- Giesel FL, Hadashchik B, Cardinale J, et al. F-18 labelled PSMA-1007: Biodistribution, radiation dosimetry and histopathological validation of tumor lesions in prostate cancer patients. *Eur J Nucl Med Mol Imaging* 2017;44:678-88. <https://doi.org/10.1007/s00259-016-3573-4>
- Barbosa FG, Querioz MA, Nunes RF, et al. Non-prostatic diseases on PSMA imaging: A spectrum of benign and malignant findings. *Cancer Imaging* 2020;20:23. <https://doi.org/10.1186/s40644-020-00300-7>
- Noto B, Vrachimis A, Schäfers M, et al. Subacute stroke mimicking cerebral metastasis in 68Ga-PSMA-HBED-CC PET/CT. *Clin Nucl Med* 2016;41:e449-51. <https://doi.org/10.1097/RLU.0000000000001291>
- Trabulsi EJ, Rumble RB, Jadvar H, et al. Optimum imaging strategies for advanced prostate cancer: ASCO guideline. *J Clin Oncol* 2020;38:1963-96. <https://doi.org/10.1200/JCO.19.02757>
- Radwan N, Phillips R, Ross A, et al. A phase 2, randomized trial of observation vs. stereotactic ablative radiation for oligometastatic prostate cancer (ORIOLE). *BMC Cancer* 2017;17:453. <https://doi.org/10.1186/s12885-017-3455-6>
- Parker CC, James ND, Brawley CD, et al. Radiotherapy to the primary tumour for newly diagnosed, metastatic prostate cancer (STAMPEDE): A randomized controlled phase 3 trial. *Lancet* 2018;392:2353-66. [https://doi.org/10.1016/S0140-6736\(18\)32486-3](https://doi.org/10.1016/S0140-6736(18)32486-3)
- Jenittrant P, Touijer KA. Role of surgery in oligometastatic prostate cancer. *Prostate Int* 2019;7:125-30. <https://doi.org/10.1016/j.pri.2019.10.001>
- Decaestecker K, De Meerleer G, Ameye F, et al. Surveillance or metastasis-directed therapy for oligometastatic prostate cancer recurrence (STOMP): Study protocol for a randomized, phase 2 trial. *BMC Cancer* 2014;14:671. <https://doi.org/10.1186/1471-2407-14-671>
- Han S, Woo S, Kim YJ, et al. Impact of 68Ga-PSMA PET on the management of patients with prostate cancer: A systematic review and meta-analysis. *Eur Urol* 2018;74:179-90. <https://doi.org/10.1016/j.euro.2018.03.030>
- Perera M, Papa N, Christidis D, et al. Sensitivity, specificity, and predictors of positive 68Ga-prostate-specific membrane antigen positron emission tomography in advanced prostate cancer: A systematic review and meta-analysis. *Eur Urol* 2016;70:926-37. <https://doi.org/10.1016/j.euro.2016.06.021>
- von Eyben FE, Picchio M, von Eyben R, et al. 68Ga-labeled prostate-specific membrane antigen ligand positron emission tomography/computed tomography for prostate cancer: A systematic review and meta-analysis. *Eur Urol Focus* 2018;4:686-93. <https://doi.org/10.1016/j.euf.2016.11.002>
- Afshar-Oromieh A, Holland-Letz T, Giesel FL, et al. Diagnostic performance of 68Ga-PSMA-11 (HBED-CC) PET/CT in patients with recurrent prostate cancer: Evaluation in 1007 patients. *Eur J Nucl Med Mol Imaging* 2017;44:1258-68. <https://doi.org/10.1007/s00259-017-3711-7>
- Ekmekcioglu O, Busstra M, Klass ND, et al. Bridging the imaging gap: PSMA PET/CT has a high impact on treatment planning in prostate cancer patients with biochemical recurrence — a narrative review of literature. *J Nucl Med* 2019;60:1394-8. <https://doi.org/10.2967/jnumed.118.222885>
- Fendler WP, Calais J, Eiber M, et al. Assessment of 68Ga-PSMA-11 PET accuracy in localizing recurrent prostate cancer. *JAMA Oncol* 2019;5:856-63. <https://doi.org/10.1001/jamaoncol.2019.0096>
- Luiting HB, van Leeuwen PJ, Busstra MB, et al. Use of gallium-68 prostate-specific membrane antigen positron-emission tomography for detecting lymph node metastases in primary and recurrent prostate cancer and location of recurrence after radical prostatectomy: An overview of the current literature. *BJU Int* 2020;125:206-14. <https://doi.org/10.1111/bju.14944>
- Emmett L, van Leeuwen PJ, Nandurkar R, et al. Treatment outcomes from 68Ga-PSMA PET/CT-informed salvaged radiation treatment in men with rising PSA after radical prostatectomy: Prognostic value of a negative PSMA PET. *J Nucl Med* 2017;58:1972-6. <https://doi.org/10.2967/jnumed.117.196683>
- Tosoian JJ, Gorin MA, Rowe SP, et al. Correlation of PSMA-targeted 18F-DCFPyL PET/CT findings with immunohistochemical and genomic data in patient with metastatic neuroendocrine prostate cancer. *Clin Genitourin Cancer* 2016;15:365-e8. <https://doi.org/10.1016/j.clgc.2016.09.002>
- Patel GK, Chugh N, Tripathi M. Neuroendocrine differentiation of prostate cancer — an intriguing example of tumor evolution at play. *Cancers* 2019;11:1405. <https://doi.org/10.3390/cancers11101405>
- Hope TA, Truillet C, Ehman EC, et al. 68Ga-PSMA-11 PET imaging of response to androgen receptor inhibition: First human experience. *J Nucl Med* 2017;58:81-4. <https://doi.org/10.2967/jnumed.116.181800>
- Afshar-Oromieh A, Debus N, Uhrig M, et al. Impact of long-term androgen deprivation therapy on PSMA ligand PET/CT in patients with castration-sensitive prostate cancer. *Eur J Nucl Med Mol Imaging* 2018;45:2045-54. <https://doi.org/10.1007/s00259-018-4079-z>
- Emmett L, Yin C, Crumbaker M, et al. Rapid modulation of PSMA expression by androgen deprivation: Serial (68)Ga-PSMA-11 PET in men with hormone-sensitive and castrate-resistant prostate cancer commencing androgen blockade. *J Nucl Med* 2019;60:950-4. <https://doi.org/10.2967/jnumed.118.223099>
- Hofman MS, Lawrentshuk N, Francis RJ, et al. Prostate-specific membrane antigen PET-CT in patients with high-risk prostate cancer before curative-intent surgery or radiotherapy (proPSMA): A prospective, randomized, multicenter study. *Lancet* 2020;395:1208-16. [https://doi.org/10.1016/S0140-6736\(20\)30314-7](https://doi.org/10.1016/S0140-6736(20)30314-7)
- Roehl KA, Antenor JA, Catalona WJ. Serial biopsy results in prostate cancer screening study. *J Urol* 2002;167:2435-9. [https://doi.org/10.1016/S0022-5347\(05\)64999-3](https://doi.org/10.1016/S0022-5347(05)64999-3)
- Rabbani F, Stroumbakis N, Kava BR, et al. Incidence and clinical significance of false-negative sextant prostate biopsies. *J Urol* 1998;159:1247-50. [https://doi.org/10.1016/S0022-5347\(01\)63574-2](https://doi.org/10.1016/S0022-5347(01)63574-2)
- Fleshner NE, O'Sullivan M, Fair WR. Prevalence and predictors of a positive repeat transrectal ultrasound-guided needle biopsy of the prostate. *J Urol* 1997;158:505-9. [https://doi.org/10.1016/S0022-5347\(01\)64518-X](https://doi.org/10.1016/S0022-5347(01)64518-X)
- Zaytoun OM, Jones JS. Prostate cancer detection after a negative prostate biopsy: Lessons learnt in the Cleveland Clinic experience. *Int J Urol* 2011;18:557-68. <https://doi.org/10.1111/j.1442-2042.2011.02798.x>
- de Rooij M, Hamoen EHJ, Fütterer JJ, et al. Accuracy of multiparametric MRI for prostate cancer detection: A meta-analysis. *AJR Am J Roentgenol* 2014;202:343-51. <https://doi.org/10.2214/AJR.13.11046>
- Park SY, Jung DC, Oh YT, et al. Prostate cancer: PI-RADS version 2 helps preoperatively predict clinically significant cancers. *Radiology* 2016;280:108-16. <https://doi.org/10.1148/radiol.16151133>
- Woythall N, Arsenic R, Kempkensteffen C, et al. Immunohistochemical validation of PSMA expression measured by 68Ga-PSMA PET/CT in primary prostate cancer. *J Nucl Med* 2018;59:238-43. <https://doi.org/10.2967/jnumed.117.195172>
- Scheltema MJ, Chang JJ, Stricker PD, et al. Diagnostic accuracy of 68Ga-prostate-specific membrane antigen (PSMA) positron-emission tomography (PET) and multiparametric (mp)MRI to detect intermediate-grade intra-prostatic prostate cancer using whole-mount pathology: Impact of the addition of 68Ga-PSMA PET to mpMRI. *BJU Int* 2019;124:42-29. <https://doi.org/10.1111/bju.14794>
- Hadashchik BA, Weber M, Iravani A, et al. Prostate-specific membrane antigen positron-emission tomography (PSMA-PET) in high-risk nonmetastatic castration-resistant prostate cancer (nmCRPC) SPARTAN-like patients (pts) negative by conventional imaging. *Eur Urol Suppl* 2019;18:E698-9x. [https://doi.org/10.1016/S1569-9056\(19\)30510-X](https://doi.org/10.1016/S1569-9056(19)30510-X)

44. Gravis G, Boher JM, Chen YH, et al. Burden of metastatic castration-naive prostate cancer patients, to identify men more likely to benefit from early docetaxel: Further analyses of CHAARTED and GETUG-AFU15 studies. *Eur Urol* 2018;73:847-55. <https://doi.org/10.1016/j.eururo.2018.02.001>

45. Ost P, Reynders D, Decaestecker K, et al. Surveillance or metastasis-directed therapy for oligometastatic prostate cancer recurrence: A prospective, randomized, multicenter, phase 2 trial. *J Clin Oncol* 2018;36:446-53. <https://doi.org/10.1200/JCO.2017.75.4853>

46. Phillips R, Shi WY, Deek M, et al. Outcomes of observation vs stereotactic ablative radiation for oligometastatic prostate cancer: The ORIOLE phase 2, randomized clinical trial. *JAMA Oncol* 2020;6:650-9. <https://doi.org/10.1001/jamaoncol.2020.0147>

47. Scher HI, Morris MJ, Stadler WM, et al. Trial design and objectives for castration-resistant prostate cancer: updated recommendations from the Prostate Cancer Clinical Trials Working Group 3. *J Clin Oncol* 2016;34:1402-18. <https://doi.org/10.1200/JCO.2015.64.2702>

48. Vapiwala N, Hofman MS, Murphy DG, et al. Strategies for evaluation of novel imaging in prostate cancer: Putting the horse back before the cart. *J Clin Oncol* 2019;37:765-9. <https://doi.org/10.1200/JCO.18.01927>

49. Irvani A, Violet J, Azad A, et al. Lutetium-177 prostate-specific membrane antigen (PSMA) theranostics: Practical nuances and intricacies. *Prostate Cancer Prostatic Dis* 2020;23:38-52. <https://doi.org/10.1038/s41391-019-0174-x>

50. Kratochwil C, Fendler WP, Eiber M, et al. EANM procedure guidelines for radionuclide therapy With 177 Lu-labelled PSMA-ligands (177 Lu-PSMA-RLT). *Eur J Nucl Med Mol Imaging* 2019;46:2536-44. <https://doi.org/10.1007/s00259-019-04485-3>

51. Herrmann K, Larson SM, Weber WA. Theranostic concepts: More than just a fashion trend — introduction and overview. *J Nucl Med* 2017;58:1S-2S. <https://doi.org/10.2967/jnumed.117.199570>

52. Hofman MS, Violet J, Hicks RJ, et al. [(177)Lu]-PSMA-617 radionuclide treatment in patients with metastatic castration-resistant prostate cancer (LuPSMA trial): A single-center, single-arm, phase 2 study. *Lancet Oncol* 2018;19:825-33. [https://doi.org/10.1016/S1470-2045\(18\)30198-0](https://doi.org/10.1016/S1470-2045(18)30198-0)

Correspondence: Dr. Ur Metser, Joint Department of Medical Imaging, University of Toronto, Toronto, ON, Canada; Ur.Metser@uhn.ca



It's never been so easy to invest in your CPD Education!

UROpedia[™] CANADA



2021 Virtual Meeting Recordings



Toolkits



Section 3 Programs



CUAJ Articles

cua.org/UROpedia

SINCE JANUARY 2021:

OVER **2700** visits to UROpedia Canada

OVER **20** Recorded Webinars & Virtual Meetings

CLAIM OVER **80** Section 3 Credits